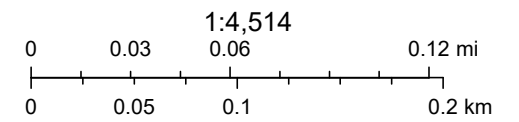
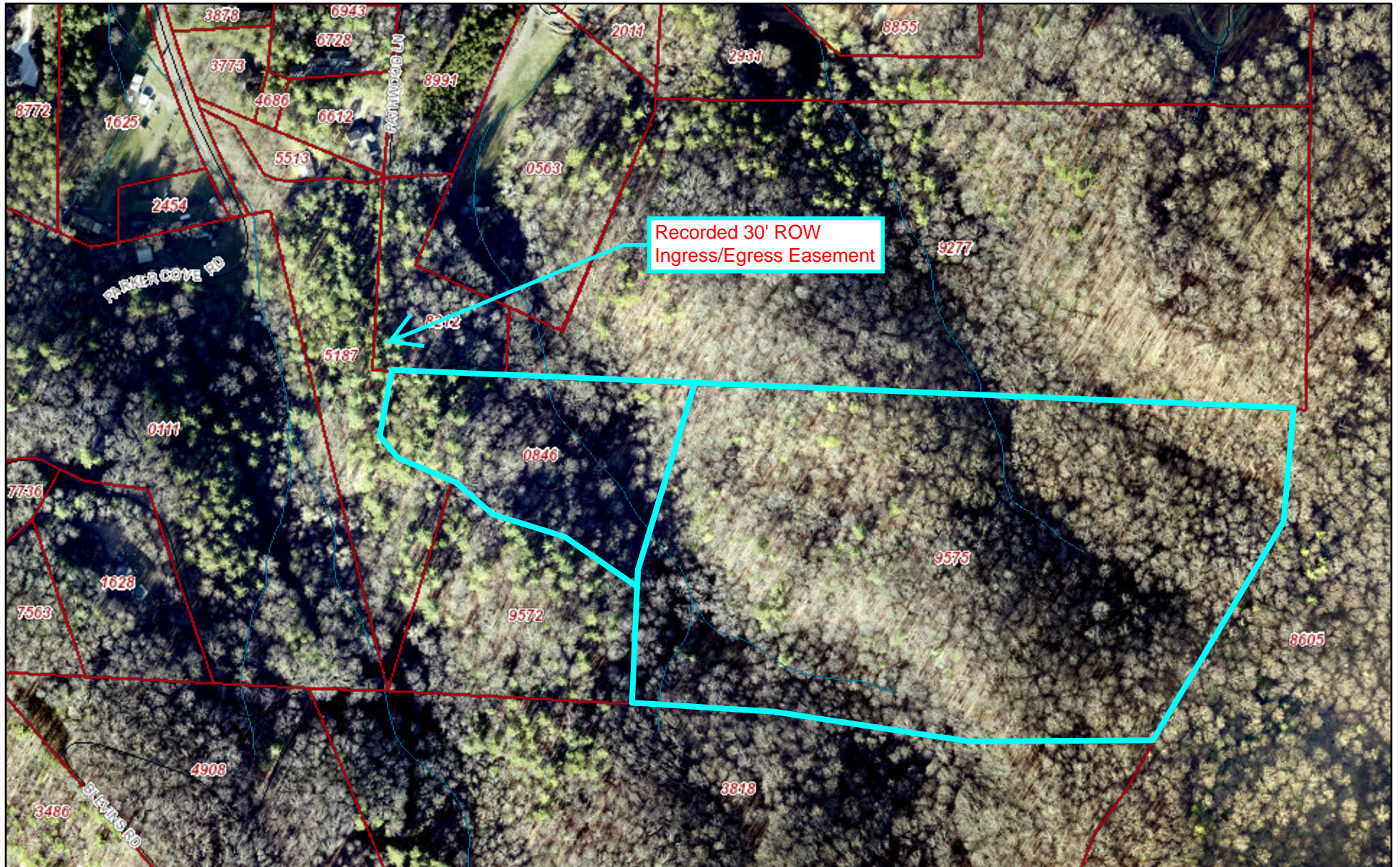
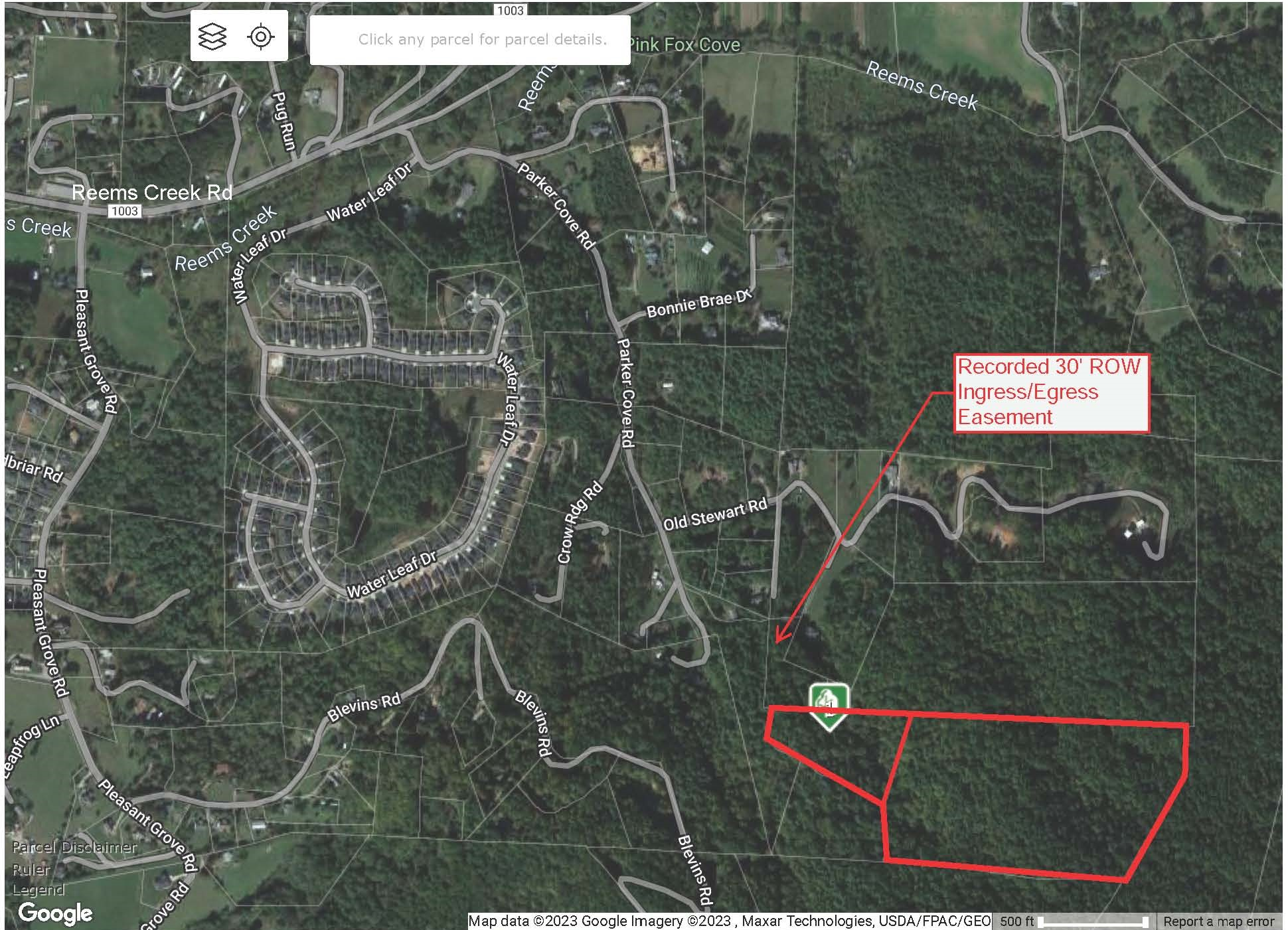


Aerial - 2 Parcels Parker Cove Rd



AERIAL



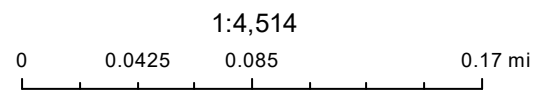
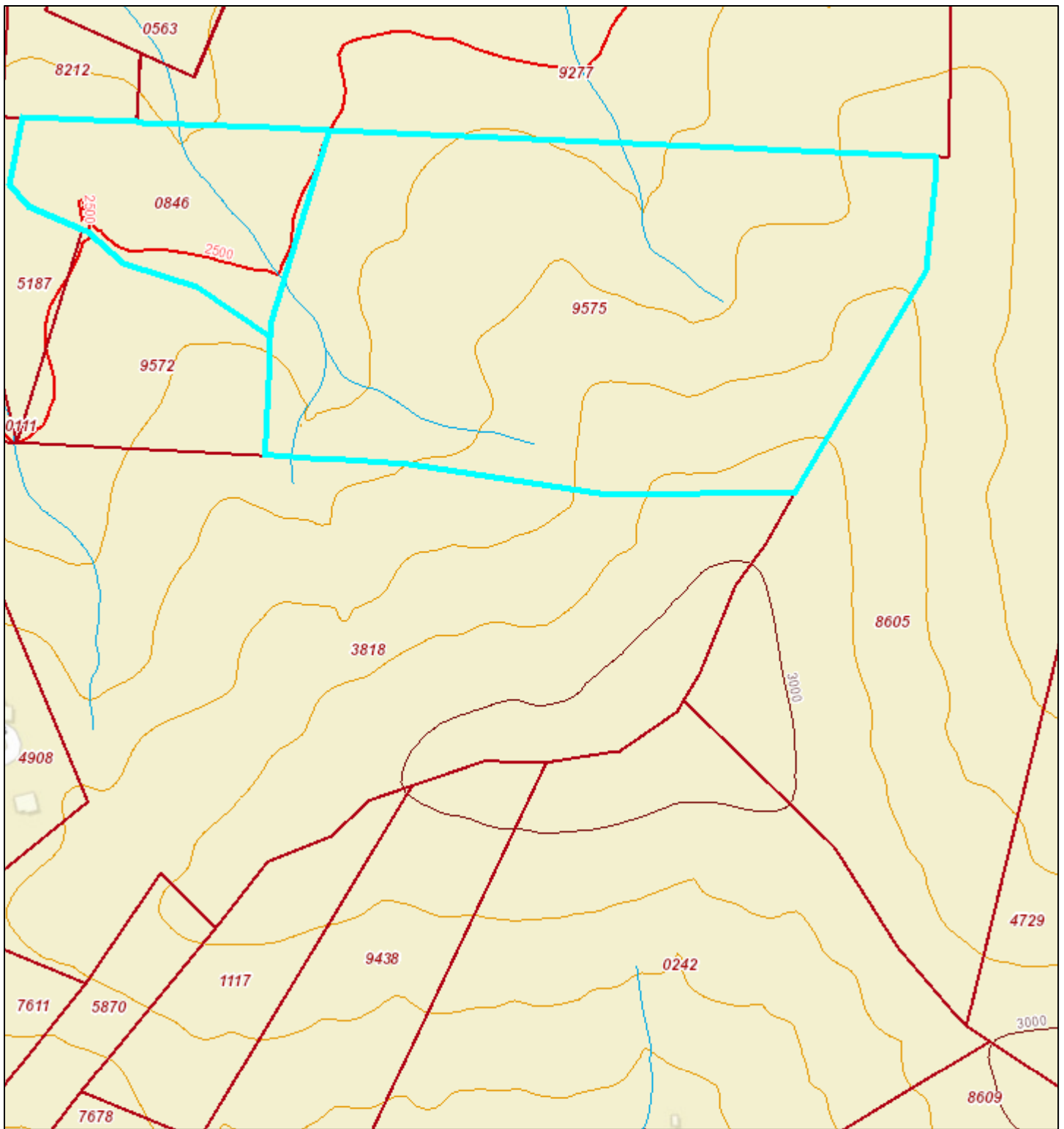
Click any parcel for parcel details.

Recorded 30' ROW
Ingress/Egress
Easement

Parcel Disclaimer
Ruler
Legend



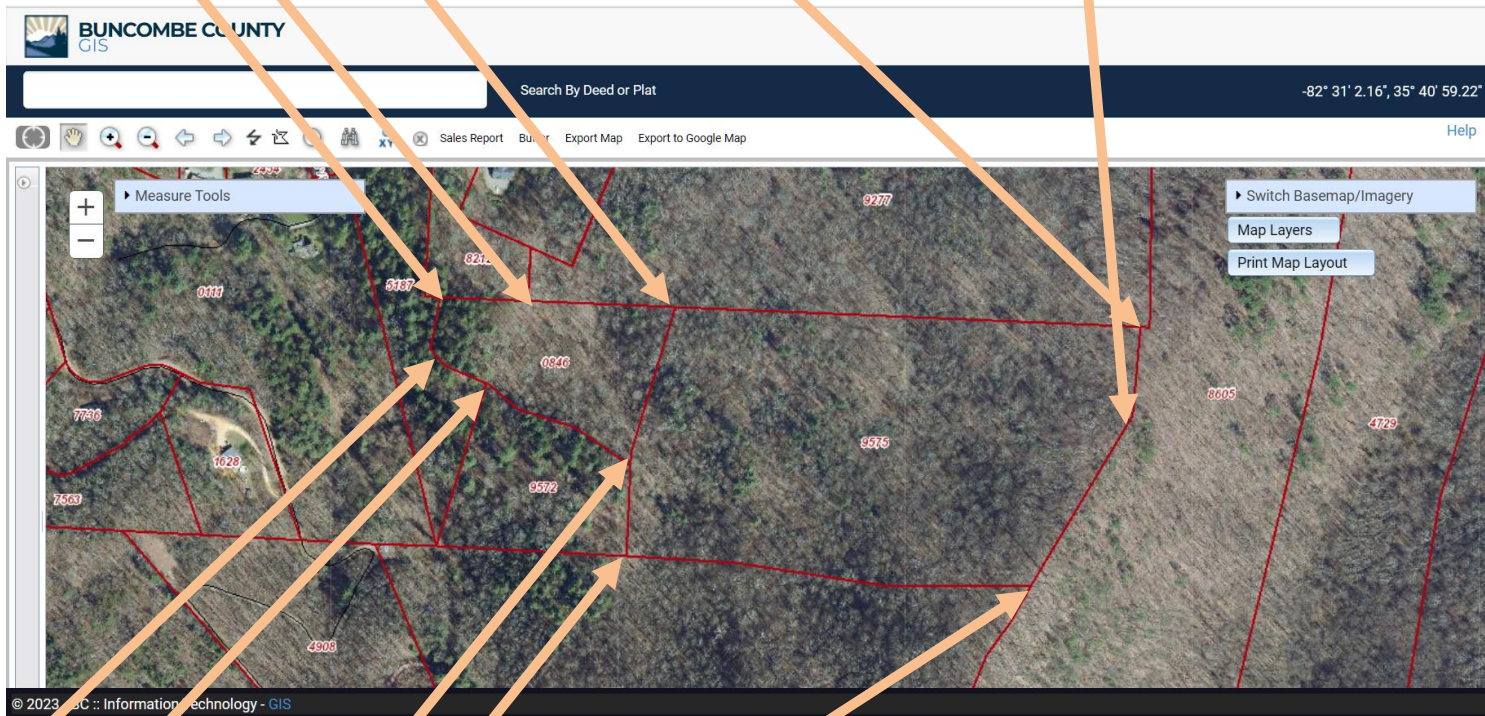
Parker RE-Parker Cove Topo



Sources: Esri, HERE, Garmin, USGS, Intermap, INCREMENT P, NRCan, Esri Japan, METI, Esri China (Hong Kong), Esri Korea, Esri (Thailand), NGCC, (c) OpenStreetMap contributors, and the GIS User Community

Approximate Latitude & Longitude of Parcels 0846 & 9575

Corner Parcel 0846, Adj: 5187(LINDSAY MARVELEN) ,8212(BARDEN DUSTIN et al) Longitude ~ -82 D 31 M 2.16 S, Latitude ~ 35 D 40 M 59.22 S
 Parcel 0846, Adj: 9277&8212(BARDEN DUSTIN et al) Longitude ~ -82 D 30 M 59.17 S, Latitude ~ 35 D 40 M 59.19 S
 Common Corner Parcel 0846, 9575, Adj: 9277 (BARDEN DUSTIN et al) Longitude ~ -82 D 30 M 54.07 S, Latitude ~ 35 D 40 M 59.06 S
 NE Corner Parcel 9575, Adj: 8605 (RAY JOHN et al), 9277 (BARDEN DUSTIN et al) Longitude ~ -82 D 30 M 38.08 S, Latitude ~ 35 D 40 M 58.43 S
 Curve Point Parcel 9575, Adj: 8605 (RAY JOHN et al) Longitude ~ -82 D 30 M 38.24 S, Latitude ~ 35 D 40 M 56.02 S



Curve Corner Parcel 0846, Adj: 5187(LINDSAY MARVELEN) Longitude ~ -82 D 31 M 2.54 S, Latitude ~ 35 D 40 M 57.8 S
 Common Corner Parcel 0846, Adj: 9572,5187&9572(LINDSAY MARVELEN) Longitude ~ -82 D 31 M 0.6 S, Latitude ~ 35 D 40 M 56.83 S
 Common Corner Parcel 0846, 9575, , Adj: 9572 (LINDSAY MARVELEN) Longitude ~ -82 D 30 M 55.62 S, Latitude ~ 35 D 40 M 54.57 S
 Common Corner Parcel 9575, Adj:3818(PAQUOT & CO LLC),9572 (LINDSAY MARVELEN) Longitude ~ -82 D 30 M 55.74 S, Latitude ~ 35 D 40 M 52.03 S
 SE Common Corner Parcel 9575 Adj: 3818(PAQUOT & CO LLC),8605 (RAY JOHN) Longitude ~ -82 D 30 M 41.83 S, Latitude ~ 35 D 40 M 51.22 S